

Swift-UVOT

Post-Launch

Status

Pete Roming

S. D. Hunsberger, C. Gronwall, J. A. Nousek,
A. A. Breeveld, K. O. Mason, UVOT PSU
Team, UVOT MSSL Team,
& UVOT SwRI Team





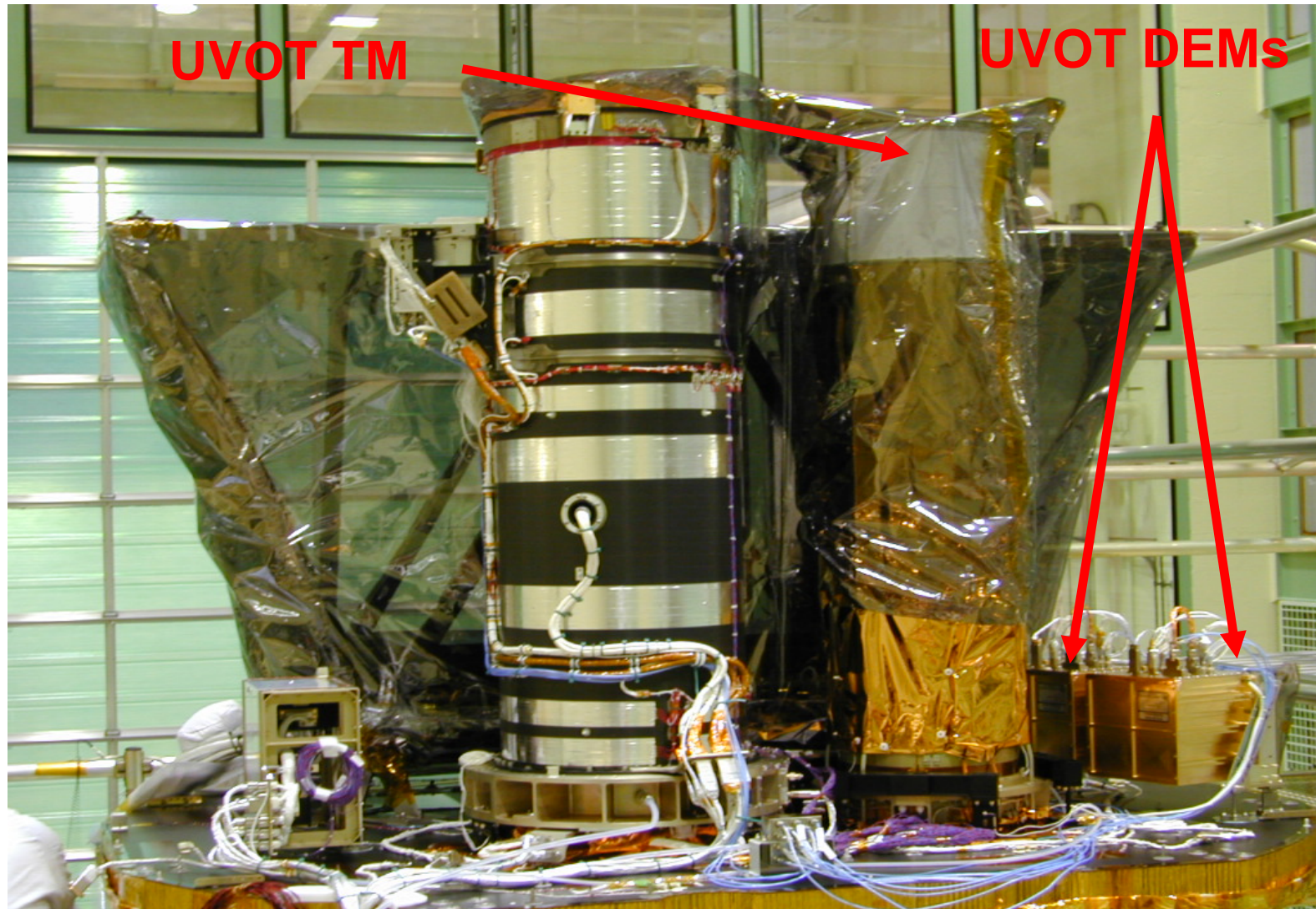
UVOT Team



PARTICIPATING INSTITUTIONS

- Penn State University
- Mullard Space Science Lab
- Southwest Research Institute
- Starsys Research Corporation
- Swales Aerospace
- Goddard Space Flight Center





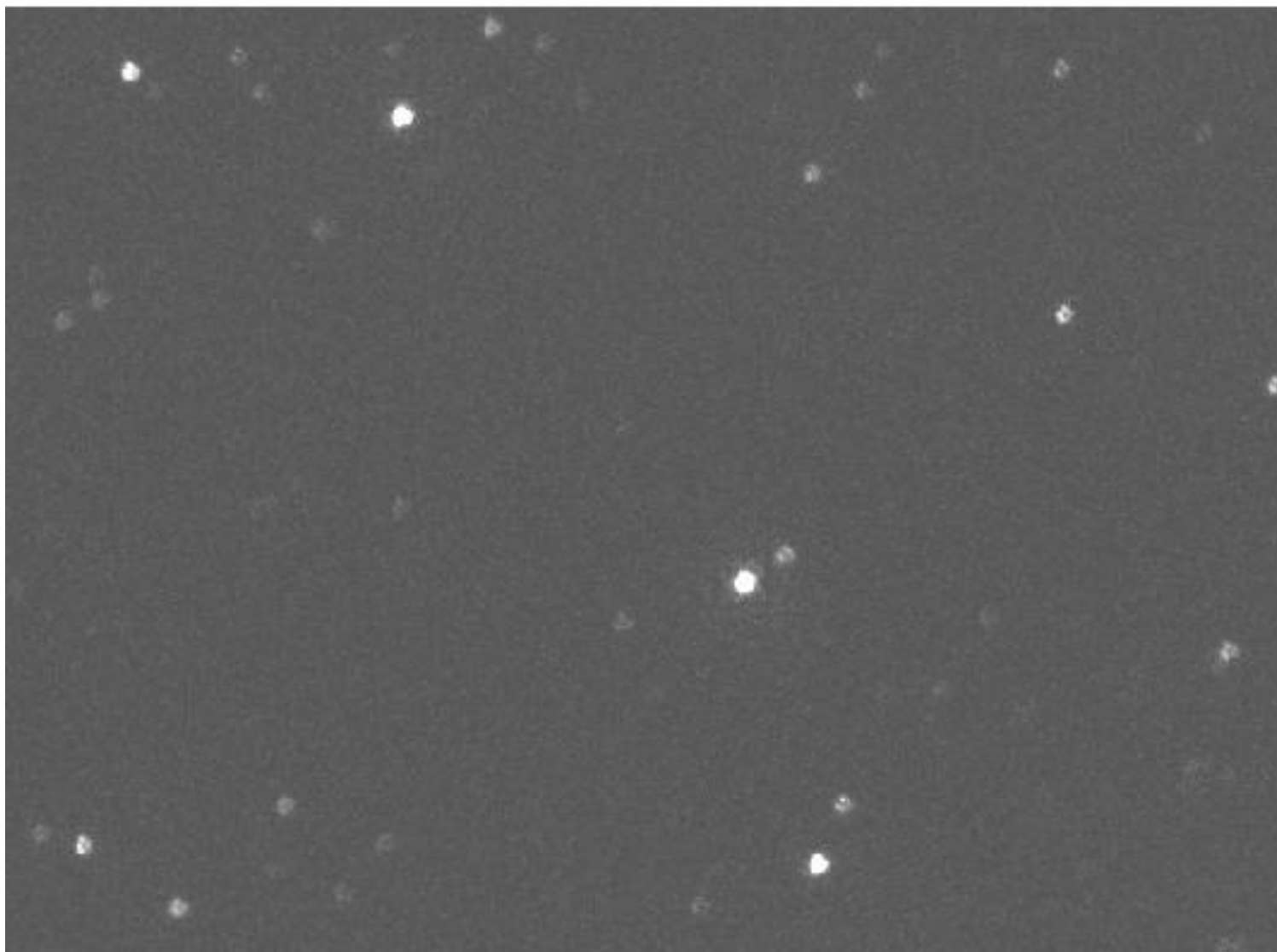


UVOT Activation Timeline



- DEM Activated – November 26
- UVOT Aperture Door Opened – December 14
- TM Activated – December 17
- HV Enabled – January 5
- Filter Continuity Check (1st Light) – January 6
- Focus Adjustments – January 10-16
- Safety Circuit Calibration – January 18



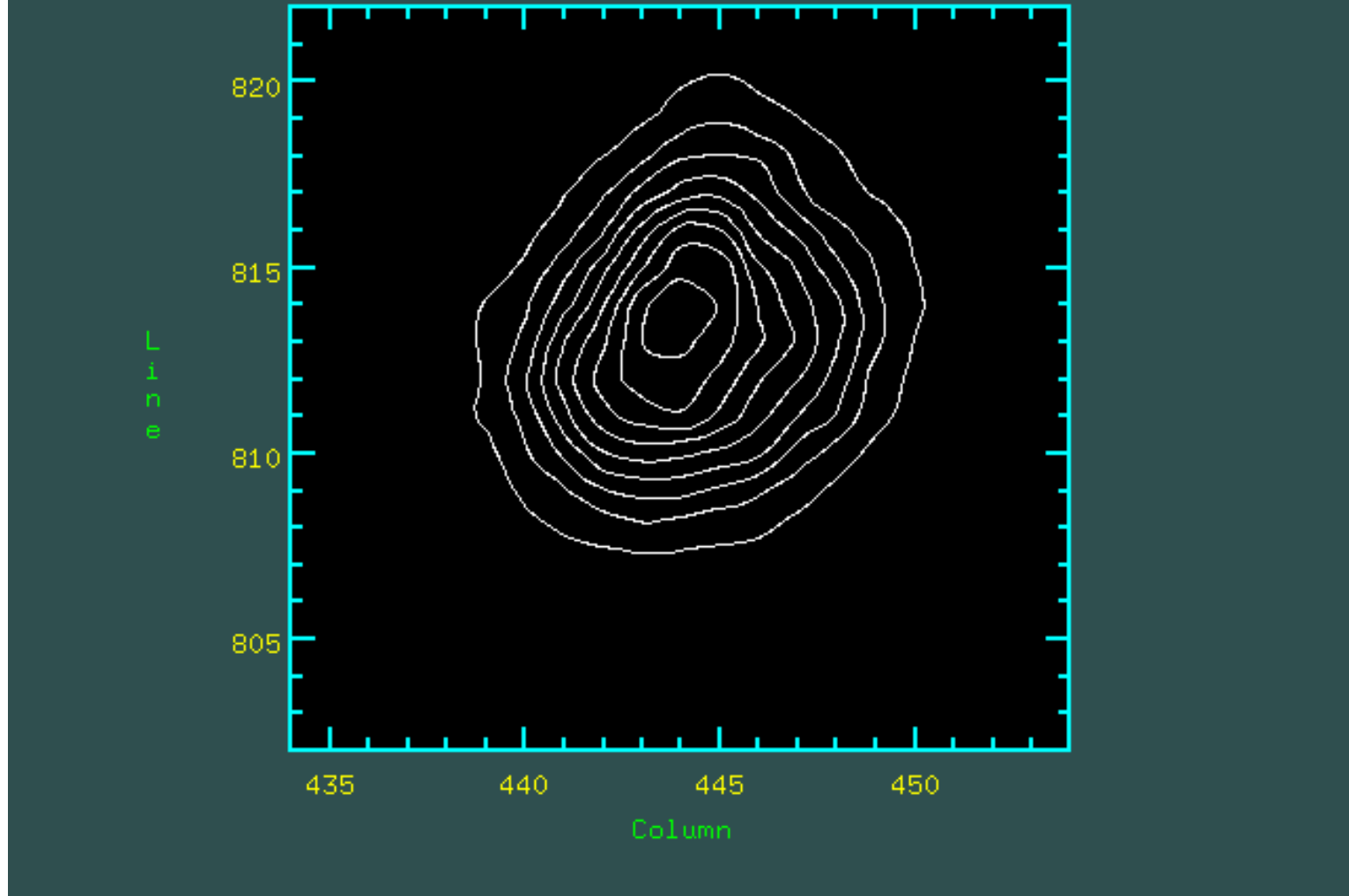


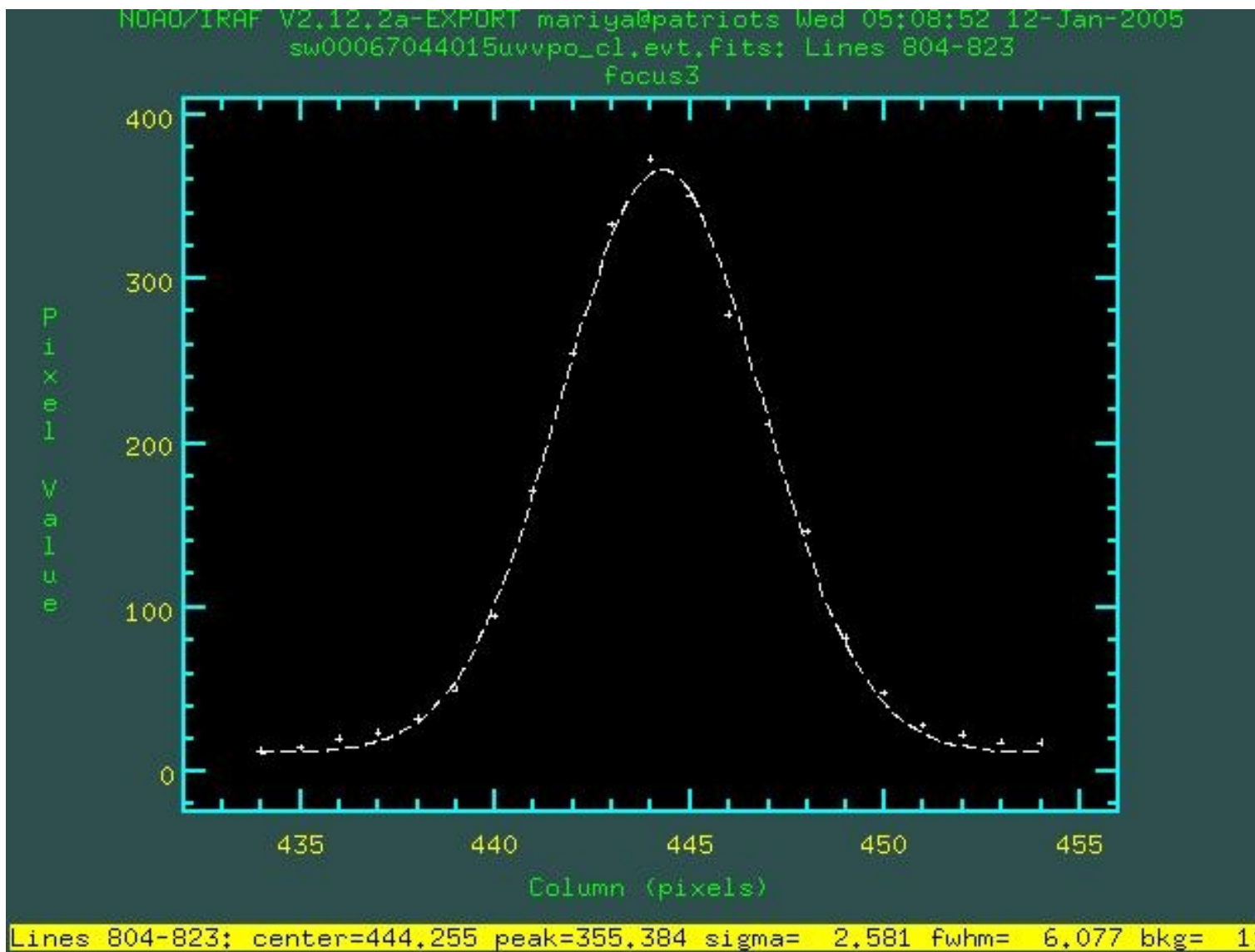


UVOT Focus Star Contour Plot



NDA0/IRAF V2.12.2a-EXPORT mariya@patriots Wed 05:04:01 12-Jan-2005
sw00067044015uvvp0_cl.evt.fits: Contoured from 5. to 905., interval = 100,
focus3







UVOT On-Orbit Calibration Activities



- Grism clocking test
- Stray-light
- Software window test
- Co-alignment and Boresight
- Distortion
- Grism transformation
- Grism wavelength vs. position
- Grism sensitivity vs. wavelength
- PSF
- Optical photometry
- Co-I loss measurements
- Color transformation
- Timing mode test
- UV photometry
- Line Spread Function
- Detector window test
- Red leaks test
- Magnifier field test
- Bad pixels
- Pixel-to-pixel sensitivity/flat field
- Dark frame

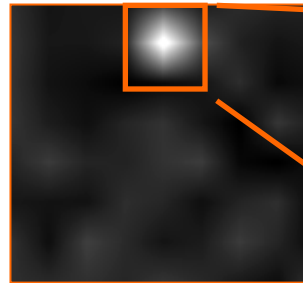


Settling

- S/C settling on target
- Target moving in UVOT FoV
- Mode = Event (Timing)
- FoV = Full
- Filter = UVW2
- Exposure = ~12 s

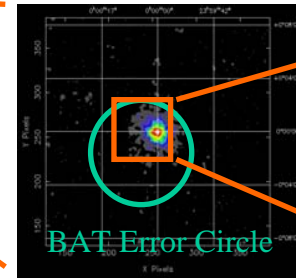
Finding Chart/GeNI

BAT Burst Image



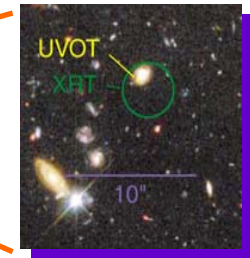
T < 10 sec

XRT Image



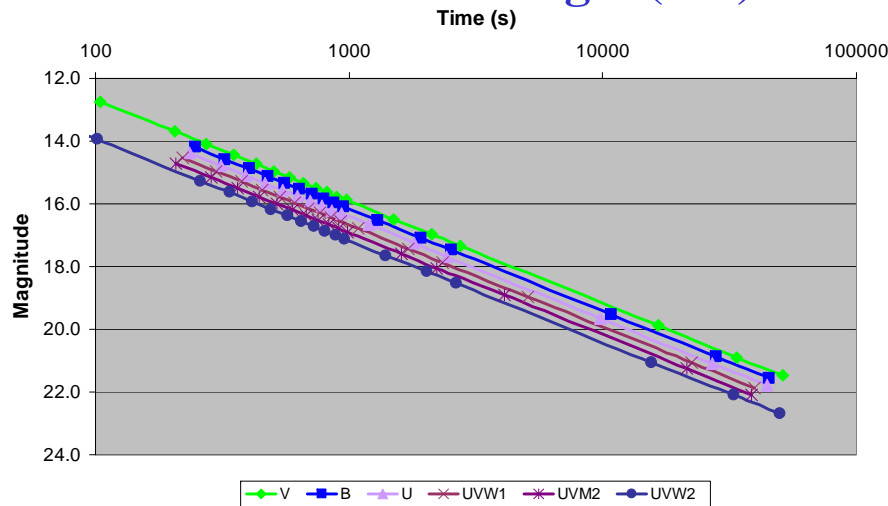
T < 90 sec

UVOT Image



T < 300 sec

Automated Target (AT)

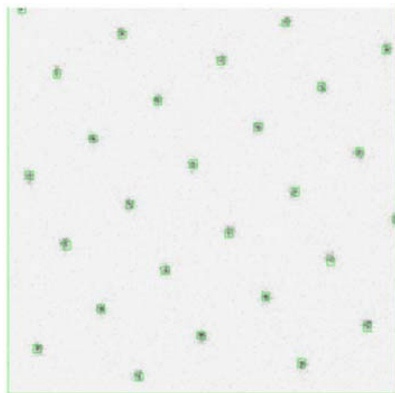


Pre-Planned Target (PT)

- Continuing follow-up of afterglows
- Survey Targets
- Targets-of-Opportunity



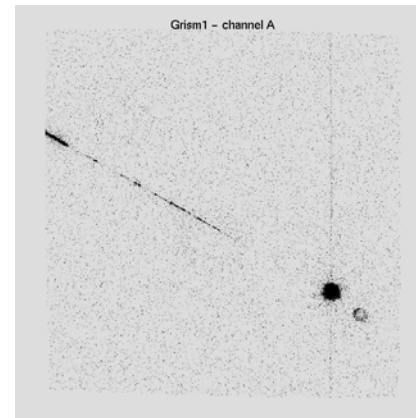
Image



Finding Chart



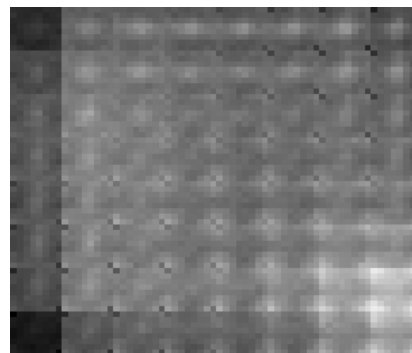
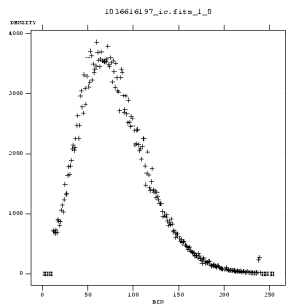
Grism



Event Lists

X	Y	t
1045	965	126144451.094385
896	1118	126144451.094385
1045	965	126144451.105385
1045	965	126144451.116385
896	1118	126144451.116385
1045	965	126144451.127385
1045	965	126144451.138385
896	1118	126144451.138385

Engineering Exposures



GRB Neighborhood Image

